



Glass Bottom Dishes

WillCo Wells B.V. is the manufacturer of various types of the finest – and unique design in Glass Bottom Dishes. We created the first design over ten years ago, shortly after the introduction of the “inverted” confocal microscope.



WillCo Wells B.V.

WG plein 287, 1054 SE Amsterdam, the Netherlands.

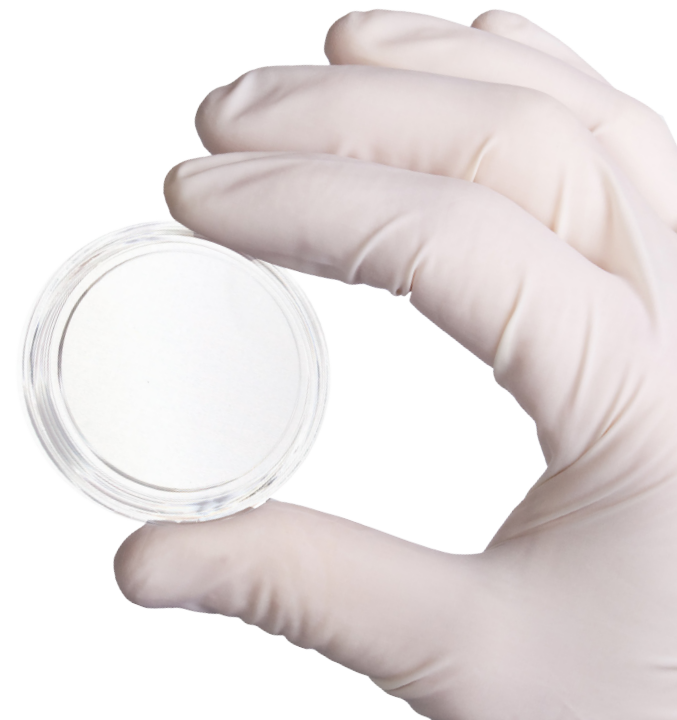
info@willcowells.com • www.willcowells.com

Why Glass Bottom Dishes?

For a wide range of microscope applications and techniques, it is necessary to use Glass (Bottom Dishes) and many new applications showed their light since. Many different names were introduced, for the “Glass Bottom Dish”, such as e.g.: “Glass Bottom Cell Culture Dish”, “Coverslip Bottom Dish”, “Glass Well Dish” or “Glass Bottom Petri Dish”.

Design

1. When looking at the WillCo-dish®'s, it is immediately obvious that they do not have a regular outer “steep walled” shape. They make an irregular and robust impression on the Microscope Technician, holding our dish in his/her hand, for the first time. Nevertheless, they look fantastic!
2. When picking up the dish from a warming stage, it shows why they look so solid; the dish has an integrated outer ring. You do not have to worry about the lid, because it has a smaller diameter than the dish. The outer ring ensures a safe grip of the dish and its valuable content, your cells. To keep the (German) glass coverslip bottom “flat & flush” with the stage-warmer, it is of major importance to have a firm dish, with a solid wall.



Features / range

transparent range



black range



Types of WillCo-dish® 's

We offer our Glass bottom Dishes, in a diameter of 35 mm., as well as 50 mm. The 35 mm. dish, we designed with an aperture of 12 mm., as well as an aperture of 22 mm. The 50 mm. dish, we designed with an aperture of 30 mm., as well as an aperture of 40 mm.

Advantages

1. A much larger effective range, using an objective lens with a short working distance (WD).
2. No birefringence effect because of thin (0.17 mm.) glass bottom.
3. Low rim/side wall of the dish and a larger effective working distance (WD) make micromanipulation and micro-injection possible.
4. Higher effective N.A. make brighter images (In e.g.: Fluorescence).
5. Higher effective N.A. make higher resolutions in image analysis.
6. Microscope light passess through the bottom glass in a rectangular way, glass rests on the stage.
7. Direct heating from the microscroscope -stage, because the bottom glass is (flush) in direct contact with the stage.
8. In IVF, no more oocyte-/embryo transfer is needed from one plastic dish to another, unless different media are being used, saving a lot of time.
9. Easy "perfusion" in the glass bottom dish, for continuous in- and outflow of solutions, using "Perfusion Chamber Insert".

Applications



Microscope applications

A wide range of applications followed since the first magnificent “bare inverted-confocal” microscopes were introduced. And many applications were performed, long before the rise of the confocal microscope, already using the Glass bottom Dishes, such as e.g. High Magnification (with high N.A.), Fase Contrast and DIC.

Applications

- Live Cell Microscopy
- Multi-Photon Laser Scanning Microscopy (MPLSM)
- High Level Laser Fluorescence Lifetime Imaging Microscopy (FLIM)
- Fluorescence Resonance Energy Transfer (FRET)
- Fluorescence Redistribution After Photobleaching Microscopy (FRAP)
- Epifluorescence Microscopy
- Fluorescence Microscopy
- Immunofluorescence Microscopy
- Confocal Microscopy
- Confocal Laser Scanning Microscopy (CLSM)
- Phase Contrast Microscopy
- Polarized Light microscopy
- Differential Interference Contrast (DIC)
- High Resolution Image Analysis
- Time Lapse Photography
- Video-Enhanced Microscopy
- Infrared Imaging (Eg: Brain slide recordings)
- Calcium Imaging
- Colocalization Studies
- Green Fluorescence Protein (GFP)
- Micromanipulation
- Microinjection

Fertility & Infertility

Laboratories for “Fertility & Infertility (IVF, ICSI, IMSI, Pre-Implantation Diagnostics, etc.)” showed great interest in the WillCo-dish® “Series GWSt-5040”, because of its design and High Tech quality. The final design (50 x 7 mm) was supported by the Staff of several University “Fertility and Infertility” Departments/- IVF-Clinics.

Scientific Fields

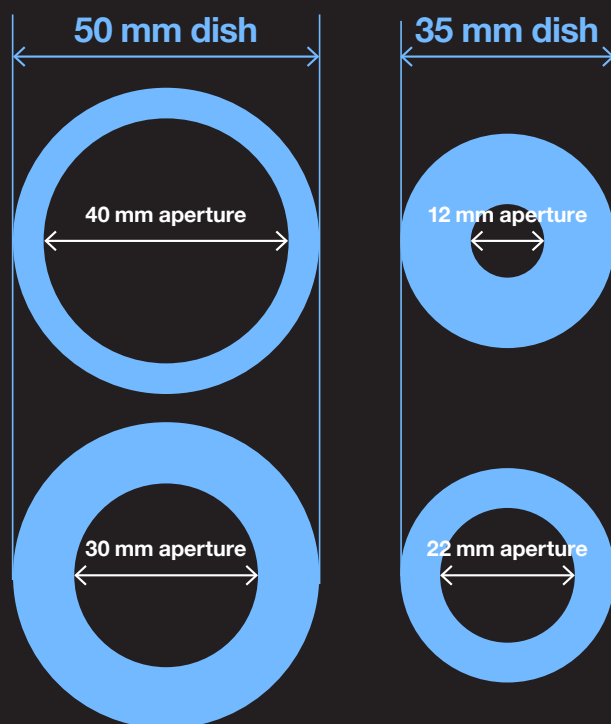
Glass Bottom Cell Culture dishes are used in the fields of Life Science and Environmental Research, Marine -, Micro - , Molecular – and Cell Biology, Cell Culture and Cell Physiology, Biotechnology, Neurology, Pathology, Pharmacology and many more.

Microscope Manufacturers

Since the very start of the design of our WillCo-dish® Glass Bottom Dishes, we have been in contact with the Staff & Representatives of the “Four Big Microscope Manufacturers”, Carl Zeiss, Leica Microsystems, Nikon and Olympus. Company Staff, as well as Product Managers and Sales Representatives, soon recognized the unique design and High Tech quality of the WillCo-dish® Glass BottomDishes. They are happy to use them during their demonstrations, (in house -) workshops, as well as during their shows.



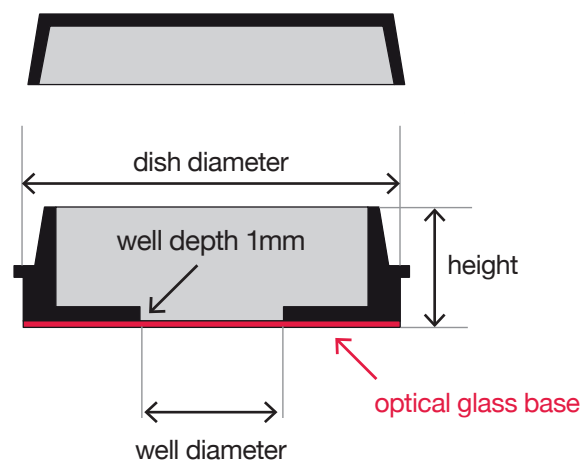
Technical Specifications



Size and apertures

50 mm. dish,
designed with an aperture of 30 mm.,
as well as an aperture of 40 mm.

35 mm. dish,
designed with an aperture of 12 mm.,
as well as an aperture of 22 mm.



Production

Production takes place in a Class 10.000
Clegan Room, Certified under EN46001,
EN46002, ISO 9001 and ISO 9002.

All WillCo-dish® 's are gamma irradiated
(STERILE R), Certified EN552.

Packaging

We deliver your WillCo-dish® 's in

- BLISTER-PACK /
- pouch pack
- WillCo-dish®KIT "Do-It-Yourself"

TYVEK® is a registered trade name/ - mark
registered by Dupont de Nemour.



Distributors

Over the years, we have created a network of fine Entrepreneurs, our well respected [Distributors](#). Without their continuous support of the WillCo-dish®'s, it would not have been possible either, to grow and develop to our current position in the market of the Glass Bottom Dishes.



WillCo Wells B.V.
WG plein 287, 1054 SE Amsterdam, the Netherlands.
info@willcowells.com • www.willcowells.com

BLISTER-PACK / Transparent

Reference code	Size / mm.	Diameter aperture	Volume/ mL	Packed	Total/ Case	STERILE R	PRICE Nett*
GWSt-3512	35 x 10	12 mm. glass	??? mL	single unit	120 units	Gamma	Euro 426
GWSt-3522	35 x 10	22 mm. glass	??? mL	single unit	120 units	Gamma	Euro 426
GWSt-5030	50 x 7	30 mm. glass	??? mL	single unit	120 units	Gamma	Euro 426
GWSt-5040	50 x 7	40 mm. glass	??? mL	single unit	120 units	Gamma	Euro 426

BLISTER-PACK / Black

Reference code	Size / mm.	Diameter aperture	Volume/ mL	Packed	Total/ Case	STERILE R	PRICE Nett*
GWSB-3512	35 x 10	12 mm. glass	??? mL	single unit	120 units	Gamma	Euro 426
GWSB-3522	35 x 10	22 mm. glass	??? mL	single unit	120 units	Gamma	Euro 426
GWSB-5030	50 x 7	30 mm. glass	??? mL	single unit	120 units	Gamma	Euro 426
GWSB-5040	50 x 7	40 mm. glass	??? mL	single unit	120 units	Gamma	Euro 426

BLISTER-PACK / Transparent / Foil Bottom Dish

Reference code	Size / mm.	Diameter aperture	Volume/ mL	Packed	Total/ Case	STERILE R	PRICE Nett*
FWSt-5030	50 x 7	30 mm. foil	??? mL	single unit	120 units	Gamma	Euro 570

(For MICRO-DISSECTION, we offer the WillCo-dish®FOIL Bottom Dish; PEN/PET, 2 micron).

POUCH-PACK / Transparent

Reference code	Size / mm.	Diameter aperture	Volume/ mL	Packed	Total/ Case	STERILE R	PRICE Nett*
HBSt-3512	35 x 10	12 mm. glass	??? mL	20/sleeve	200 units	Gamma	Euro 530
HBSt-3522	35 x 10	22 mm. glass	??? mL	20/sleeve	200 units	Gamma	Euro 530
HBSt-5030	50 x 7	30 mm. glass	??? mL	20/sleeve	200 units	Gamma	Euro 530
HBSt-5040	50 x 7	40 mm. glass	??? mL	20/sleeve	200 units	Gamma	Euro 530

POUCH-PACK / Black

Reference code	Size / mm.	Diameter aperture	Volume/ mL	Packed	Total/ Case	STERILE R	PRICE Nett*
HBSB-3512	35 x 10	12 mm. glass	??? mL	20/sleeve	200 units	Gamma	Euro 530
HBSB-3522	35 x 10	22 mm. glass	??? mL	20/sleeve	200 units	Gamma	Euro 530
HBSB-5030	50 x 7	30 mm. glass	??? mL	20/sleeve	200 units	Gamma	Euro 530
HBSB-5040	50 x 7	40 mm. glass	??? mL	20/sleeve	200 units	Gamma	Euro 530

Despatch & Shipping

We always take excellent care off - and value your order(s). Orders arriving before 12:00 AM will be despatched the same day and shipping will be by FedEx ("Track & Trace" your order, on the FedEx web site).

Payment Terms, general Terms and Conditions

You are welcome to read our "Payment terms ..." as well as our general terms and conditions of "Sale & Delivery", on our website www.willcowells.com, in the heading COMPANY, in Terms.pdf. You are also welcome to file a request to receive our terms, by fax.

(*): Additional fees:

Handling & Packaging fee:
Euro 15.00
Administration fee:
Euro 15.00

Ordering



WILLCO WELLS™
BEYOND VISION

WillCo Wells B.V.
WG plein 287, 1054 SE Amsterdam, the Netherlands.
info@willcowells.com • www.willcowells.com

WillCo-dish® KIT “Do-It-Yourself”

Besides the pre-fab WillCo-dish® s, a “Do-It-Yourself” kit is available.

WillCo-dish®KIT “Do-It-Yourself”

Reference code	Size / mm.	Diameter aperture	Volume/ mL	Packed	Total/Case	STERILE R	PRICE Nett*
KIT-3512	35 x 10	12 mm. glass	???	4 Parts	500 units	Gamma	Euro 475
KIT-3522	35 x 10	22 mm. glass	???	4 Parts	500 units	Gamma	Euro 475
KIT-5030	50 x 7	30 mm. glass	???	4 Parts	500 units	Gamma	Euro 475
KIT-5040	50 x 7	40 mm. glass	???	4 Parts	500 units	Gamma	Euro 475

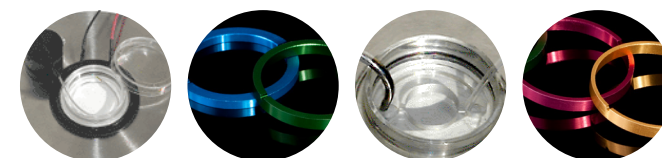
(*): **Additional fees:**
Handling & Packaging fee: Euro 15.00
Administration fee: Euro 15.00

ASSEMBLY DEVICE for “Do-It-Yourself”-WillCo-dish®KIT dishes

Reference code	Size / mm.	Diameter aperture	Volume/ mL	Packed	Total/Case	STERILE R	PRICE Nett*
DEV-3512	35 x 10	12 mm.	???	2 Parts	1 unit	NO	Euro 475
DEV-3522	35 x 10	22 mm.	???	2 Parts	1 unit	NO	Euro 475
DEV-5030	50 x 7	30 mm.	???	2 Parts	1 unit	NO	Euro 475
DEV-5040	50 x 7	40 mm.	???	2 Parts	1 unit	NO	Euro 475

Accessories

Several accessoires are provided for working with the WillCo-dish®. See our website, mail or ask for further information.



Orders

For your orders, we invite you to address them to our “Sales Department”
fax + 31 (0) 20 685 0333, e-mail, to: sales@willcowells.com www.willcowells.com .
or regular mail to: WillCo Wells B.V., WG plein 287, 1054SE Amsterdam, the Netherlands.

Note: Please do not hesitate to contact us, for your enquiries, questions and/or remarks.